



— 2 0 2 5 —

Annual Fall Conference

FRIDAY, SEPTEMBER 12 • LANSING CENTER



AD JOURNAL



BRAIN INJURY
ASSOCIATION
OF MICHIGAN

2025

Annual Fall Conference

FRIDAY, SEPTEMBER 12 • LANSING CENTER

WELCOME TO THE CONFERENCE!

Thank you for joining us at the 2025 Brain Injury Association of Michigan's Annual Fall Conference! I would like to express my deepest gratitude to our exhibitors, sponsors, and partners whose support has made this event possible. Your commitment to our mission is invaluable, and we are proud to have you as part of our community.

To our speakers, your expertise and dedication to improving the lives of those affected by brain injuries inspire us all. Your contributions to this conference will undoubtedly make a lasting impact on our attendees.

To our attendees, I encourage you to actively engage in the discussions, connect with fellow participants, and take full advantage of the knowledge and resources available here. Your presence and participation are what make this conference a success.

Finally, I would like to extend my heartfelt thanks to the dedicated staff and volunteers of the Brain Injury Association of Michigan who have worked tirelessly to organize this event. Your passion and commitment to our mission are truly commendable.

As we embark on this journey together, let us remember that our collective efforts have the power to change lives. Together, we can make a difference in the lives of those affected by brain injuries.

Kind regards,

Nichole Shotwell
President & CEO
Brain Injury Association of Michigan

Bringing More to Brain Injury Survivors



In response to the isolation brought on by the 2020 pandemic, the Brain Injury Association of Michigan launched **BIAMI CONNECTS** to unite the brain injury community during an especially challenging time.

BIAMI CONNECTS has remained a primarily virtual program that brings individuals together through education, wellness, and social and recreational activities. From winning prizes on virtual Bingo, to attending a summer Detroit Tiger's game, **BIAMI CONNECTS** offers something for everyone!



To learn more about **BIAMI CONNECTS**, scan QR code or reach out to Jenna at janheuser@biami.org or (810) 229-5880.



Catastrophic Care

AUTO INJURY & WORKERS' COMPENSATION

Supporting a seamless transition into long-term recovery with the care and resources patients need to regain independence and improve quality of life.



Expert Care. Thoughtful Collaboration. Better Outcomes.

1st Call works hand-in-hand with case managers, guardians, and families to ensure every patient receives the attention, compassion, and expertise they deserve. Our dedicated team — including HHAs, LPNs, RNs, and skilled therapists — is guided by an experienced RN Clinical Director and Attendant Care Coordinator, allowing us to deliver seamless, personalized care. Together, we help patients recover with dignity while giving care teams confidence that patients are fully supported every step of the way.



CONDITIONS

Traumatic
Brain Injuries (TBI)
Spinal Cord
Injuries (SCI)
Orthopedic Injuries



SERVICES

Skilled Nursing
Hourly Nursing
Hi-Tech Aides
Attendant Care
Wound Care
Physical Therapy
Occupational Therapy



INSURANCE

Medicare, Auto Insurance,
BCBSM PPO, HAP,
HAP CareSource
(Dual Medicare/Medicaid),
Meridian (WellCare), Priority
Health(PPO/Medicare Advantage),
UHC (PPO/Medicare Advantage/
Dual Complete),
Workers' Compensation



Serving
Michigan

Referrals:
586.782.6363





Here for You. Then. Now. Always.

Thanks for trusting AdvisaCare over the last 25+ years. As many of you know, we are more than just a home care, nursing and therapy organization — we have become a lifeline for those impacted by life-changing injuries.

Alongside you, we have faced challenges that could have caused us to give up — but we didn't. Since the 2019 Auto Insurance Reform, providers have struggled. We, like you, called upon to endure, rolling up our sleeves and fighting more fiercely than ever for those we serve.

We may not be perfect BUT our organization is stronger, and our mission is clearer than ever: **to be here when it matters most.**

When life changes in an instant, you're not alone. AdvisaCare Companies are here, ready to help — like we always have been.

YOUR fight is OUR fight.



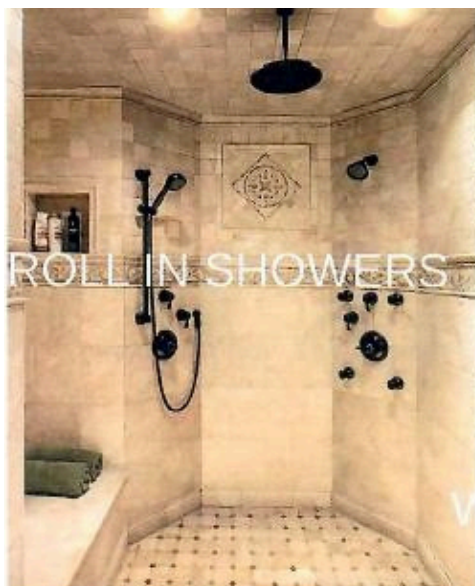
OUR SERVICES

- ♥ Skilled Nursing & Therapy
- ♥ Attendant Care & Personal Assistance
- ♥ Catastrophic Injury & Long-Term Care
- ♥ Home Health & Hospice Services
- ♥ Behavioral Health (ABA)

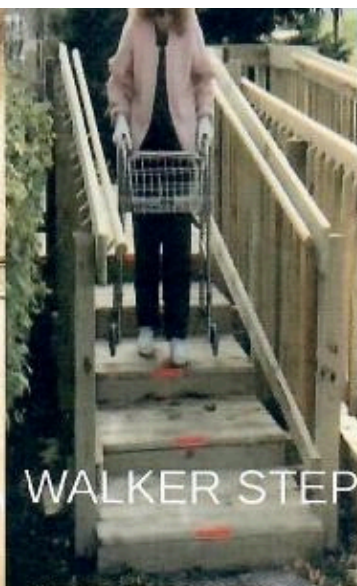
Call us today — we don't quit, and neither should you.

Now accepting legacy patients and post-2019 auto accident survivors.

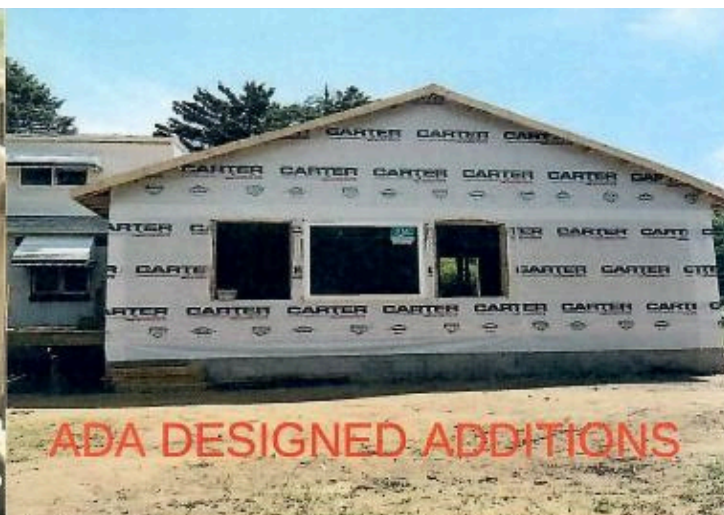
1 (877) 654-4144 | [advisacare.com](https://www.advisacare.com)



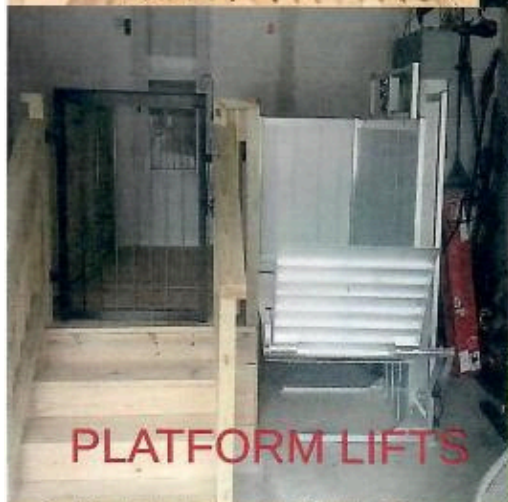
ROLL IN SHOWERS



WALKER STEP



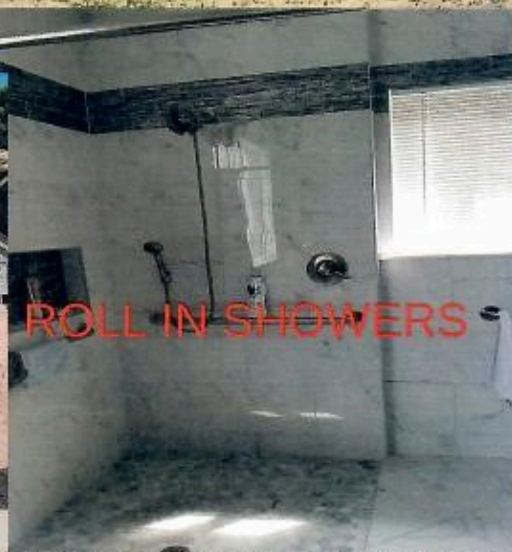
ADA DESIGNED ADDITIONS



PLATFORM LIFTS



HANDRAILS



ROLL IN SHOWERS



STAIR LIFTS



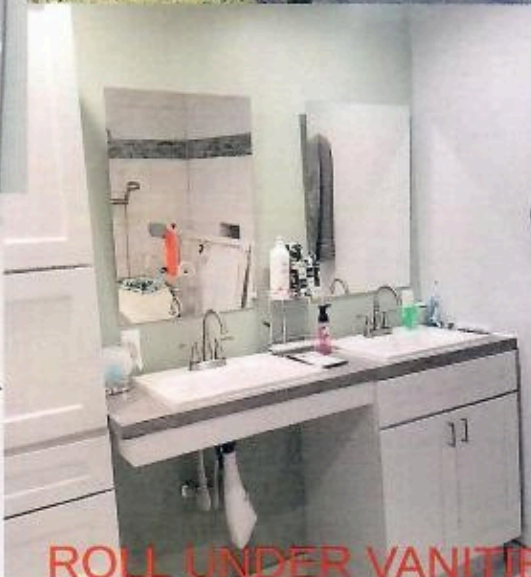
OVERHEAD LIFTS



RAMPS



BARRIER FREE PLUS, INC.
barrierfreeplusinc.com
DISABILITY MODIFICATION SPECIALIST
586-598-2600



ROLL UNDER VANITIES



THIS IS YOUR HOME!



We tell our clients, “This is your home! Make it your own.”

At Cognilive, we empower our clients to experience fulfilling, vibrant lives through personalized care plans that offer independence, freedom of choice, and a focus on individual preferences.

START YOUR NEW LIFE TODAY

COGNI  LIVE

[COGNILIVINGTODAY.COM](https://cognilivingtoday.com)



Community CONNECTIONS



Providing semi-independent residential programming to Traumatic Brain Injury survivors through trusting & therapeutic relationships



Home & Community Based Occupational Therapy



Individual & Group Recreation Events



Supported Employment Opportunities



Supporting Members of BIAMI, CPAN, & MBIPC



**Service Areas: Metro Detroit, Kent County,
Greater Lansing Area**



**www.ccfil.com
248.410.2715
info@ccfil.com**





Concussion Navigator

concussionnavigator.org

The Concussion Navigator is the go-to resource for parents and youth in Michigan to navigate concussion care. This app provides clear, step-by-step guidance for managing concussions, from recognizing and tracking symptoms, seeking care through specialists, and providing information on return to school and play.





<http://www.crcmich.com>

We provide Assistive Technology through the latest tech devices, including computer hardware, software, tablets, smart phones, the internet, apps, and other technology related equipment and activities.

We also perform individual analysis for technology purchase, configuration, set-up, and one-on-one specialized training.

We serve all of Michigan as well as upper Indiana and Ohio.

CRC provides the following services for individuals with disabilities; specializing in TBI, spinal cord injuries, and veterans:

Assistive Tehcnology
Rehabilitation Plans
Smart Phone Monitoring

Technology Monitoring
Environmental Controls
Hands Free Technology

Security Cameras
Internet Security
Smart Home Set-up



*B*est wishes to the
**Brain Injury Association
of Michigan for a successful
Annual Fall Conference!**

DIGNITAS

...a sense of dignity and community...
Rehabilitation specialists for
T.B.I. and Spinal Cord Injuries
www.dignitasinc.com



You make it possible. We help make it easier.

Comprehensive medication management solutions tailored for the unique needs of neurorehabilitation providers.



We really enjoy working with the team at **Guardian Pharmacy of Michigan**. Their staff is very flexible and willing to work with with us to make sure things are running smoothly. Guardian's team is very helpful and **can be depended on to get the job done."**

—
Ann Pendley, RN, MSN, President
Eisenhower Center, Ann Arbor, Michigan



To discover the benefits of a Guardian partnership for your community, contact:
Robert Moser, Director of Sales & Marketing
robert.moser@guardianpharmacy.net | guardianpharmacymichigan.com

Reimagining Medication Management. Transforming Care.





Recover, Rebuild, Renew.

Experiencing a traumatic brain injury? You're not alone. TBI affects millions, but hope is within reach. We specialize in comprehensive treatment plans tailored to a unique recovery journey. Our dedicated team combine cutting-edge therapies and compassionate support to help reclaim a better quality of life.

Choose the Lighthouse

Adult Residential Care and Rehabilitation

- Post-Acute Care
- Long-Term Care
- Semi-Independent Living

Outpatient Therapy Rehabilitation

Behavioral Health Intervention



"Making Sure The Life You're Living Is A Life Worth Living"
Providing Phenomenal Care and Services Since 1987

Caro: 1655 E. Caro Rd, Caro MI, 48723 (989)673-2500

Traverse City: 4040 Beacon St., Kingsley MI, 49649 (231) 263-1350





Working to Challenge the Constitutionality of the 56-hour Per Week Limitation on Family Provided Attendant Care

NO-FAULT ATTORNEYS SPECIALIZING
IN CATASTROPHIC INJURIES

LEARN MORE ABOUT HOW WE HELP
SURVIVORS AND THEIR FAMILIES

**LISS
ANDREWS**
ATTORNEYS AT LAW

39400 Woodward Avenue | Suite 200
Bloomfield Hills, MI 48304
248-647-9700

lissfirm.com



*Welcome home.
Every Step forward is Victory*

**Family owned and operated-
36 years of experience - AFC licensed group
homes - Semi-independent apartment living -
Community Integration - up to 24/7 care**

**Sign up for your tours:
Contact Dan Eaton
[248] 930-6528**



Building independence, one task at a time.

Unit Descriptions

Production - Assembly/Manufacturing

Kitchen - Planning, Shopping, and Cooking

Business - Marketing, Custom Shirts, and Merch

Creative - Art, 3-D Printing, Laser cutter,

Audio/Visual - Podcast, Video Production

Music - Black Velvet

Enclaves - Community Work

**Sign up for your tour
Contact Charlie Norwood
(734) 890-2708**





Why Choose Us?



*Impassioned innovators in comprehensive rehabilitation, collaborating to **unleash the functional potential** of every individual served!*



Home / Community - Based Therapy & Support

Individualized. Functional. Collaborative. Comprehensive.
PT, OT, SLP, TREC, MSW



Specialty Evaluations

Attendant Care, Accessibility (Home & Vehicle),
Equipment, Academic / Vocational



Supported Community Living Program

Accessible / Monitored living environment; Supports &
Services (Therapy, Home Management / Maintenance,
Money / Medication Management)

For information, assistance,
and/or referrals, contact
MI Rehab Solutions:



616.431.5360



admin@mirehabsolutions.com



www.mi-rehabsolutions.com

Serving West
Michigan!





MILLER & TISCHLER, P.C.

ATTORNEYS AT LAW

Legal Services for the Catastrophically
Injured and Their Service Providers

Premier No-Fault Specialists

Specializing in Catastrophic Loss Issues:

- *Attendant Care*
- *Barrier Free Design and Home Modifications*
- *Negligence Claims*
- *Medical/Rehabilitation Provider Claims*
- *Case Management Issues*
- *Vans*

*We bring commitment, experience and exceptional service
to each of our clients*

28470 W. 13 Mile Road, Suite 300, Farmington Hills, MI 48334
248/945-1040 Phone • 248/536-5042 Fax
EMAIL: wmiller@msapc.net
www.millertischler.com



NeuroRestorative Michigan is a leading provider of post-acute rehabilitation and support services for individuals with traumatic brain injury, spinal cord injury and other challenges. In various locations and settings, we provide a continuum of care and community-based, functionally-oriented programs.

We provide individualized day, vocational and therapeutic opportunities in a structured and supportive environment, with flexible scheduling options available. We provide flexible scheduling options for individuals based on their goals. Our team members include: On-site medical director, nurses, physical therapists, occupational therapists, speech therapists, direct support professionals and life skill trainers.

Our Supports and Services

- Vocational Rehabilitation
- Recreational Therapy
- Medical Support and Oversight
- Physical, Occupational, and Speech Therapy
- Group Therapy
- Counseling
- Community Integration/Community-based Employment Support
- Hobby Development/Creative Therapy
- Physical Fitness/Wellness
- Money Management and Job Preparation
- Family Education

Call to schedule a tour or admission evaluation today at 800-743-6802.

For more information on our supports and services, please scan the QR code.



Contact us:

☎ 800-743-6802

✉ NRinfo@sevitahealth.com

🌐 neurorestorative.com





origami
REHABILITATION
expert neuro care



RESHAPING LIVES. ONE FOLD AT A TIME.

Origami Rehabilitation, a CARF-accredited 501(c)(3) nonprofit, has been serving the community for nearly 30 years. With locations in Mason, Grand Blanc, South Lansing, and West Lansing, it proudly supports individuals across Michigan.



Origami provides comprehensive rehabilitation for children and adults with neurological, developmental, mental health, and orthopedic conditions through its residential and outpatient programs.

From Origami's scenic 35-acre residential campus to its innovative outpatient services, including driver rehabilitation and pediatric feeding therapy, Origami provides holistic, person-centered care.



OrigamiRehab.org



517-336-6060



Info@OrigamiRehab.org



LOCATIONS

Main: 3181 Sandhill Rd., Mason, MI 48854

East: 859 Health Park Blvd., Grand Blanc, MI 48439

Greenlawn: 405 W. Greenlawn Ave., Suite 425, Lansing, MI 48910

West: 137 S. Marketplace Blvd., Lansing, MI 48917



PROUD SPONSOR of the 2025 BIAMI FALL CONFERENCE

Pharmascript of Michigan

is honored to support the Brain Injury Association of Michigan and its mission to improve the lives of those affected by brain injury.

As a Michigan-based pharmacy specializing in long-term care and complex medication management, we are committed to supporting individuals on their path to recovery—with compassion, expertise, and personalized care.



Since 2004, PharmaScript has been dedicated to providing pharmaceutical care and services to a range of facilities, including assisted living, adult foster care, group homes, juvenile justice centers, and rehabilitation facilities.

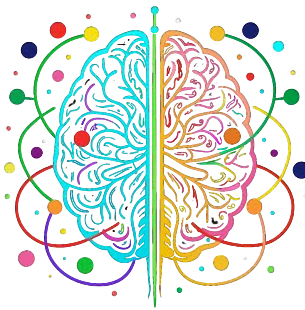
Our high service level and commitment to problem solving has made PharmaScript the pharmacy of choice for patients and providers across the Midwest.

37484 Interchange Drive • Farmington Hills, MI 48335
P 248.435.3500 • F 248.435.8643 • pharmascript.com





*We're Proud to be a Part of the
Brain Injury Association of Michigan's*



2025

Annual Fall Conference

FRIDAY, SEPTEMBER 12 • LANSING CENTER



(734) 721-4821

info@qualityhomemed.com

273 Manufacturers Drive | Westland, MI

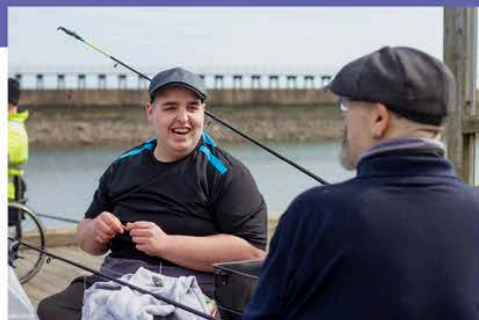


Rehab Without Walls

Working together to provide the Neuro Care Continuum



Rehab Without Walls®
Neuro Rehabilitation



RESIDENTIAL NEURO THERAPY

A devastating injury has taken control of your life; let us help you take it back. Our patients are immersed in resources focused on maximizing physical, mental, and social potential. Each day begins with a specially formulated, individualized, plan for success. Let us be the home away from home on the path back to independence.

Services and Amenities (varies by location)

- 24-Hour Personal Care
- Cognitive Therapy
- Barrier-Free Room and Board
- Speech Therapy
- Counseling and Mentorship
- Physical Therapy
- Educational Programming
- Occupational Therapy
- Community Outings
- Comprehensive DME and HME Assessment
- Daily outings and activities focused on development of neurological skills

Residential Services

Semi-Independent Apartment Program	Dixie Lodge Living & Wellness
Ann Arbor, MI	Holly, MI
p) 248.991.4030	p) 810.866.4277
f) 810-866-4470	f) 810-866-4470



HOME AND COMMUNITY NEURO THERAPY

RWW is a CARF accredited home and community neuro rehabilitation program that builds a therapy program around you, moving individuals outside the walls of institutional settings and into their natural home and community environment through a continuum of care.

Home and community neuro therapy is appropriate for both adult and pediatric patients who:

- Need an interdisciplinary team, including:
- PT, OT, SLP, Rec Therapy, Care Coordination
- Have suffered a recent medical event resulting in a complex injury
- Need complex problem solving related to home accessibility or a desired return to community level participation
- Have pain or endurance limitations that make travel to therapy difficult

By providing care in the home, community, workplace, or school, RWW promotes greater health through the recovery process, all with industry-leading outcomes that dramatically improve functional skills and independence for patients.

Home & Community

State Wide Program
p) 888.619.9735
f) 855-218-0204



OUTPATIENT NEURO THERAPY

Level Eleven Physical Therapy provides specialized, interdisciplinary and outcome-based care in both one-on-one sessions and group settings. We want to help you achieve a personal level of independence and success through design, access, therapies, and resources.

To achieve the best results for each patient, we create an intensive, customized therapy plan that addresses their unique medical, physical, cognitive, psychosocial, and educational needs.

Our outpatient clinics are equipped with state-of-the-art equipment and open gyms, where patients can practice everyday living skills.

Services

- Speech Therapy
- Physical Therapy
- Occupational Therapy

Outpatient - Level Eleven

Holly, MI	Saginaw, MI
p) 810.771.7686	p) 989.799.6885
f) 810-771-7685	f) 989-799-6890
Sterling Heights, MI	Trenton, MI
p) 586.978.0376	p) 734.671.1923
f) 586-978-0383	f) 734-671-1947
Howell, MI	
p) 517.546.9000	
f) 517-546-9006	



Recovery

Starts Here

Specializing in:

- Spinal cord injury
- Brain injury
- Stroke
- Amputee
- Complex orthopedics
- Medically complex cases



DMC

**Rehabilitation Institute
of Michigan**

To learn more,
visit RIMrehab.org



REV UP YOUR RECOVERY

Neurorehabilitation to help you achieve
the best outcomes possible.



We believe in the power of resilience.

And in the power to overcome adversity. Even our name is rooted in the Latin, *Resilire, to rebound*.

At Resilire Neuro we've brought together advanced practices in rehabilitation with generations of experience to provide care.

No matter where you are in your recovery journey, we'll help you GO FORWARD.

Residential Rehabilitation Outpatient Therapy Vocational Services

Services throughout Michigan including Livingston, Macomb, Midland, Oakland, Saginaw + Wayne Counties

Resilire Neuro
GO FORWARD

855-799-1455 | resilireneuro.com |



Call 855-799-1455 today!
or visit us at resilireneuro.com



Brain Injury Association of Michigan: Have a great conference!



Offering both
residential
rehabilitation and
outpatient therapy
services to individuals
with neurological
impairments,
including traumatic
brain injury, CVA and
spinal cord injuries.



3707 Katalin Court | Bay City, MI 48706
(989) 671-0866 | riversbendrehabilitation.com



MICHIGAN'S ADVOCATES
FOR THE INJURED

Injured people need an advocate.

They need Sinas Dramis Law Firm.

Advocates for the Injured are More Than Just Personal Injury Lawyers.

ADVOCATES

FIGHT to hold wrongdoers accountable for their actions

WIN the best results for their clients

CARE about clients above the attorney fee

COLLABORATE with medical providers to support healing and justice

CHAMPION community safety and injury prevention



Sinas Dramis Law Firm is proud to be
Michigan's Advocates for the Injured.

FREE CONSULTATION | SERVING ALL OF MICHIGAN

866.758.0031

sinasdramis.com



Maximize Your Recovery

Highly Specialized Medical Rehabilitation
and Care for Brain + Spinal Cord Injury



CARF-Accredited as a
Comprehensive Integrated Inpatient
Rehabilitation Program (CIIPR) in
Brain + Spinal Cord Injury



SPECIALTY BRAIN + SPINAL CORD REHABILITATION PROGRAMS

- Post- and Sub-acute Inpatient Rehabilitation
- 24/7 On-Site Nursing + Respiratory Care
- LICENSED Skilled Nursing Facility (SNF) with all private rooms
- Licensed and CARF-accredited AFC
- Neuro Residential + Transitional Care
- Therapy + Outpatient Services
- Vocational + Day Treatment Programs
- State-of-the-Art Rehabilitation Center in Romulus, MI



special tree®
Brain + Spinal Cord Rehabilitation



800-648-6885 | specialtree.com



Our compliance medication packaging options, bidirectional eMAR integrations, emergency after hours availability, and clinical care tools protect the health and improve the medication safety of your clients.

www.amacrxs.com

888.722.5579

GOLD EXHIBITOR



Where care
comes together



carecircle.co

Build Your Community

You choose who can join, what they see, and how they contribute — your Circle, your rules.

Free & Secure

Create as many private or public Circles as you need — always protected, always free.



Share What Matters Most

Post videos, updates, and messages to keep your Circle connected and informed.





Sept 25, 2025
3:00-6:00 PM
1000 N HOMER ST.
LANSING, MI 48912

Our new Outpatient Clinic is READY... now it just needs you!

JOIN US FOR AN EVENING OF CELEBRATION & SHARING

OPENING REMARKS,
MEET THE THERAPISTS,
CUTTING EDGE
EQUIPMENT DEMOS,
CHARITY WINE TASTING,
CCMI SWAG,
& MORE!

Event date



Oh CCMI, look how far we've come!

In 2024-25, Centered Care:

- Obtained our 1st CARF Accreditation - 3 years with 0 recommendations for our residential program.
- Grew our therapy team from 3 to 13 of the best neuro-therapists.
- Opened an outpatient center with the latest technology & access to functional activities.
- Welcomed residents into our beautiful new home on 10 acres.
- Nominated x3 for the 2025 BBB Torch Awards for Ethics.

& so much more!

We are so proud of who we are and the care we provide.
We would love to have you be a part of our journey.

(517) 394-1234 • centeredcaremi.org • Greater Lansing Area





CARF Accredited for Outpatient, Residential, Brain Injury & Voc



Serving Clients in Florida & Michigan!

Comprehensive Brain Injury Rehabilitation Services since 1998



- Semi-Independent Living
- Florida Group Home
- Vocational Rehab
- Outpatient Therapies



Contact Us

info@ourcmi.com

248-990-0865

CommunicareMichigan.com





RESULTS

SUPPORT AT EVERY STEP

Feinberg Consulting's Certified Case Managers coordinate every aspect of care—medical treatment, therapy, equipment, and insurance—ensuring nothing falls through the cracks. We streamline communication, reduce administrative burdens, and provide consistent oversight so recovery stays on track.

Our role is simple: deliver **CLARITY, COORDINATION,** and **PEACE OF MIND** for everyone involved.

EXPERIENCE



A TRUSTED NAME IN
CASE MANAGEMENT
SINCE 1996

Pam Feinberg
Rivkin
Founder



Steve
Feldman
CEO

Get in Touch with Us

248-538-5425



www.FeinbergCare.com

Feinberg Consulting--where Every Case Manager is a Certified Case Manager (CCM). Our team of Certified Case Managers includes RNs, BSNs, LMSWs, CLCPs, CVEs, LPCs, and vocational specialists.

We deliver the most comprehensive assessments in the industry, set clear, client-driven goals, and provide targeted interventions to achieve them. When a serious injury occurs, the client's entire team collaborates to develop a clear path forward.

**EXPERT CARE
COMPASSIONATE RESULTS**

Feinberg
consulting, inc.
A HEALTH CARE SOLUTIONS COMPANY



OUR CLIENTS INSPIRE US. OUR CARE WILL INSPIRE YOU.

Inspire Home Care has served the brain injured community for over 16 years. Our work begins with listening to our clients' amazing, inspiring stories. Only after taking the time to know each of our clients do we craft inspired, one-of-a-kind home care strategies to meet their medical, physical, emotional, and practical needs. Visit inspirehomecare.com to learn more about our high-tech nurses and aides as well as physical, occupational and speech therapists.

inspirehomecare.com

248.972.5528

inspire
HOME CARE

RN | LPN | HHA | CNA | PT | OT | SLP | Wound Care Specialist



L T C Pharmacy_{Rx}

Call us today!
866-813-9384

Family owned & operated since 1955



- ✓ **Free Home Delivery**
- ✓ **24 Hour Emergency Service**
- ✓ **Medication delivered 5-7 days before cycle begins**
- ✓ **Direct billing to auto insurance**

www.LTCPharmacyRX.com



MED & TRANS OF MICHIGAN

Non-Emergency Transportation



Servicing your Mid & Northern Michigan transportation needs since 2003



- ✓ **Reliable, on-time service**
- ✓ **Reasonable rates**
- ✓ **Safe, experienced drivers**
- ✓ **Fully insured**
- ✓ **Licensed with the State of Michigan - LARA**



◀ **Contact us today to get a quote.**



www.medtransmi.com • (810) 658-6000



ABOUT US

We are a full-service provider for individuals with brain and spinal injuries. This includes homes and apartments in Macomb and Oakland counties. Our mission is to provide comprehensive rehabilitation to support the quality of life for people with brain and spinal cord injuries. We are fully licensed through the State of Michigan and CARF accredited.



BRAIN & SPINAL CORD REHAB PROGRAMS

- Residential Services
- Community Work Integration
- Recreation Therapy
- Physician Services
- Occupational Therap
- Physical Therapy
- Behavioral Therapy
- Speech Therapy
- Medication Management
- 24/7 Supervision & On-Call

For referrals, please call:
586-300-6338

neuliferehabmichigan.com

NeuLife Rehabilitation of Michigan, Inc.
dba Progressions Rehabilitation

COMPASSION & QUALITY CARE



PIONEER
PHARMACY SERVICES
Long-Term Care Solutions

Pioneer Pharmacy Services proudly introduces our Specialty Innovative Pharmacy (S.I.P.) – a dedicated solution designed to meet the unique needs of specialty patients and facilities across Michigan.

We specialize in serving:

- Specialty group homes
- Assisted Living Centers
- Hospice Centers

Why Choose S.I.P.?

- Expert specialty-trained pharmacy technicians
- Compassionate care for medically delicate patients
- 24/7 availability – pharmacists and technicians on-site every day of the week

With multiple pharmacy locations throughout Michigan, we are committed to delivering high-quality care and exceptional service.

Farmington Hills Location:

24615 Halsted Road, Farmington Hills, MI 48335

P: 248.957.6100 | F: 248.215.0584

Sparta Location:

7560 Venture Ave NW, Sparta, MI 49345

P: 616.612.3424 | F: 888.804.2615

www.ppsltc.com



More Than Devices, Ropp Clinic Delivers Life-Changing Comfort.

Every Prosthesis and Orthosis
Is Crafted with Knowledge,
Compassion, and an
Unshakable Commitment to
Your Clients' Well-Being

Stop by our booth to meet Jeff and his team.
Discover how we deliver perfect-fit prostheses
and two-hour repairs—without ever compromising
on comfort, quality, or patient satisfaction.



Ropp
Orthopedic Clinic
your next step forward

2075 E. West Maple Rd, Suite B-207
Commerce Township, MI 48390

And, Get Your Free
2026 Desk Planner Diary/Journal and Surprise Gift!
248-669-9222 • PainFreeProsthetics.com



How can Recreational Therapy help your client?



**THERAPEUTIC RECREATION HELPS SUSTAIN THE WELL-BEING
OF THE INDIVIDUAL YEARS AFTER THEIR INJURY.**

Recreational therapy is a medical modality that uses therapy, in the form of recreation and education as a means of meeting one's physical, mental, emotional and social goals. Recreational Therapy through Strive bridges the gap between what is learned at the hospital and how to apply that and **increase integration into the client's home and community setting.**

GENERAL RECREATIONAL THERAPY BENEFITS CAN INCLUDE:

- Return to Work / School / Community Integration
- Promote Independence & Self-Confidence
- Recover Basic Motor Functioning
- Reduce Depression and Stress
- Recuparate Body Mechanics
- Increase Muscle Endurance
- Learn Transportation Accessibility
- Increase Decision Making Abilities and Time Management Skills
- Assist in Pain Management
- Increase Quality of Life and Refine Socialization Skills
- Moderate Anxiety
- Boost Coping Abilities
- Restore Energy
- Develop Planning and Cognitive Skills
- Promote Health and Wellness
- Decrease Weight Gain
- Increase Money Management Skills
- Document Improvements and Reactions

CLIENTS WHO ARE IDEAL FOR RECREATIONAL THERAPY WITH STRIVE:

- Those who have tried other techniques and therapies without success
- Those who are exhibiting signs of depression
- Those who have stated "they can't do anything anymore"
- Those who have stated they are no longer independent
- Those with the drive or ambition to do more but are unable to identify steps to achieve more
- Those who may be able to return to "work" but may need time to identify other employment abilities
- Aged work force sustaining additional injuries



Mailing Address:
7111 Dixie Hwy, #123
Clarkston, MI 48346
ph: (248) 922 1236
fax: (248) 922 1235

www.StriveRTS.com
info@StriveRTS.com

[facebook.com/StriveRecreation](https://www.facebook.com/StriveRecreation)
twitter.com/StriveInc
[instagram.com/StriveRecreation](https://www.instagram.com/StriveRecreation)

your premier in-home recreational therapy company



How can Recreational Therapy help your client?



THERAPEUTIC RECREATION HELPS SUSTAIN THE WELL-BEING OF THE INDIVIDUAL YEARS AFTER THEIR INJURY.

Recreational therapy is a medical modality that uses therapy, in the form of recreation and education as a means of meeting one's physical, mental, emotional and social goals. Recreational Therapy through Strive bridges the gap between what is learned at the hospital and how to apply that and **increase integration into the client's home and community setting.**

GENERAL RECREATIONAL THERAPY BENEFITS CAN INCLUDE:

- Return to Work / School / Community Integration
- Promote Independence & Self-Confidence
- Recover Basic Motor Functioning
- Reduce Depression and Stress
- Recuperate Body Mechanics
- Increase Muscle Endurance
- Learn Transportation Accessibility
- Increase Decision Making Abilities and Time Management Skills
- Assist in Pain Management
- Increase Quality of Life and Refine Socialization Skills
- Moderate Anxiety
- Boost Coping Abilities
- Restore Energy
- Develop Planning and Cognitive Skills
- Promote Health and Wellness
- Decrease Weight Gain
- Increase Money Management Skills
- Document Improvements and Reactions

CLIENTS WHO ARE IDEAL FOR RECREATIONAL THERAPY WITH STRIVE:

- Those who have tried other techniques and therapies without success
- Those who are exhibiting signs of depression
- Those who have stated "they can't do anything anymore"
- Those who have stated they are no longer independent
- Those with the drive or ambition to do more but are unable to identify steps to achieve more
- Those who may be able to return to "work" but may need time to identify other employment abilities
- Aged work force sustaining additional injuries



Mailing Address:
7111 Dixie Hwy, #123
Clarkston, MI 48346
ph: (248) 922 1236
fax: (248) 922 1235

www.StriveRTS.com
info@StriveRTS.com

[facebook.com/StriveRecreation](https://www.facebook.com/StriveRecreation)
twitter.com/StriveInc
[instagram.com/StriveRecreation](https://www.instagram.com/StriveRecreation)

your premier in-home recreational therapy company



TESTPOINTE
Living Centers

Residential Living Options for
Traumatic Brain Injury Patients



Community-Based Job Training Choices and Clinical Therapies



Continuum of Therapeutic Services

- Cognitive Language
- Pre-Driving Screening
- Occupational Therapy
- Physical Therapy
- Work Reintegration
- Speech Therapy
- Vocational Training & Advisors
- Vestibular/Balance Therapy
- Custom-Made Art, Products and Services for Community Customers

Berkley Clinic & Vocational Training Center
2338 Coolidge Hwy., Ste 200
Berkley, MI 48072 Ph: (248) 556-5386



Troy Clinic & Vocational Training Center
1075 E. 14 Mile Rd., Troy, MI 48083
Ph: (248) 206-1626



Livonia Clinic & Vocational Training Center
37775 Pembroke Ave., Livonia, MI 48152
Ph: (734) 779 -0717



Follow us on...



For more information contact: therapeuticrehabmi.com
Susan Miller susan.miller@uirehab.com (248) 408 - 0128



THERASUPPORT BEHAVIORAL HEALTH & WELLNESS

Semi-Independent Living for Individuals with TBI

Participants enjoy their own private apartment - a space that truly belongs to them. Our program blends clinical expertise with a focus on independence, providing the right balance of support, safety and autonomy.

Outpatient Therapy

Available for participants and the community:

- Mental Health Counseling & Psychotherapy
- Neuropsychological Testing
- Occupational Therapy
- Speech-Language Pathology
- Thera-Yoga

Our dedicated team includes:

- Medical Director
- Licensed psychologist
- Board-certified neuropsychologist
- Occupational Therapist
- Speech-Language Pathologist
- Registered Nurse
- Case Coordinator
- Direct Care Support

734-677-0200
intake@therasupport.com
www.therasupport.com





*Comprehensive Traumatic Brain
Injury Rehabilitation*

United Rehab Services PC

*Physical Therapy, Massage Therapy, Chiropractic
Care, State of the Art Laser Treatment, Psychotherapy*

**Call for an Appointment: 586-619-9390
or visit www.unitedrehabservicespc.com**
Conveniently Located in Warren and Shelby Twp



WALK THE LINE
RECOVERY THERAPY



CELEBRATING 18 YEARS

NEURO RECOVERY SPECIALISTS | CATASTROPHIC INJURIES | PHYSICAL THERAPY | OCCUPATIONAL THERAPY

248-827-1100 | WTLRECOVERY.COM

SILVER EXHIBITOR



BARRIER FREE REMODELING

Certified Aging in Place Specialists

Let us help bring **safety, freedom** and **comfort** to *your* home.



- Bath/shower chairs
- Grab bars
- Hand held shower sprayers
- Adjustable beds
- Stair chairs
- Lift chair/recliner
- Wheelchair ramps
- Lift/transfer systems
- Aluminum exterior ramps
- Exterior rails
- Tub to shower conversions



Call today and get a **FREE** consultation!

248.246.1669
capsremodeling.com

Family Owned | Insured | Licensed



Family-Owned since 1979

GRAND RAPIDS
LANSING

KALAMAZOO

TRAVERSE CITY



\$84,965 | V6-3.6 L | 25 miles

CHRYSLER PACIFICA
TOURING L

Michigan's Premier Accessible Vehicle Dealership

- ✓ NEW & USED VEHICLE SALES
- ✓ RESIDENTIAL STAIR LIFTS
- ✓ REPAIR & BODY SHOP
- ✓ SCOOTER LIFTERS & LOADERS
- ✓ WHEELCHAIR VAN RENTALS
- ✓ ADAPTIVE DRIVING AIDS

(800) 73-CLOCK

CLOCKMOBILITY.COM



Danny's Miracle Angel Network

We believe in breaking barriers through music. Our innovative technology enables individuals with mobility limitations to create music using just their eyes, breath, and head movements. Join us in a world where disabilities do not restrict musical expression.



DONATE NOW!

TO LEARN MORE
ABOUT MUSIC
THERAPY VISIT

WWW.MYDMAN.ORG

248-459-1340
B.EFROS@MYDMAN.ORG

Home  Community
Recreation Therapy
www.hcrt.net

Contact our office at 734-546-8775 or Fax 248-468-6675

Over 40 certified recreation therapists providing individualized home and community skilled therapy throughout the lower peninsula of Michigan.



Outcome-focused therapy that gets people off the sidelines and back into life



TRANSITIONS REINTEGRATION SERVICES



PROVIDER OF OCCUPATIONAL,
VOCATIONAL, AQUATIC &
RECREATIONAL THERAPY

HOME & COMMUNITY-BASED SERVICES
THROUGHOUT THE STATE OF MICHIGAN!

CONTACT US

PHONE NUMBER: 616-682-7429 • FAX: 616-825-6096

WEBSITE: www.transitionsreintegrationservices.com

EMAIL: admin@transrehabservices.com

CASE MANAGERS

Keep Your Patients Safe
with A Personal Emergency
Response System

*Medical
CareAlert*
EMERGENCY RESPONSE SYSTEMS

- Get Help at the Touch of a Button
- Simply Add to Patient's Care Plan
- Auto No-Fault Insurance Billed Directly

(248) 513-8422
medicalcarealert.com



Superior
Van & Mobility 
Making Mobility Possible!

SUPERIORVAN.COM



DRIVE YOUR INDEPENDENCE ACCESSIBLE VEHICLES & LIFTS

Try Before You Buy With Great Rates
Daily, Weekly, or Monthly at 844-648-RENT



Wheelchair and
Scooter Lifts



Mobility Seating



Wheelchair-Accessible Van
& SUV Conversions
(New & Pre-Owned)

Consumer or Commercial
SALES • SERVICE • RENTALS

734-802-5286 • 3858 Bestech Dr., STE A • Ypsilanti, MI 48197



YOGAMEDICS

EVIDENCE-BASED YOGA THERAPY

CUSTOM, EXPERT-DESIGNED YOGA PROGRAMS
THAT GO BEYOND RECREATION TO HELP YOU
RESTORE STRENGTH, FLEXIBILITY AND WELL-BEING.

Home & Community Based
throughout the state of MI.

**FIND OUT HOW YOGAMEDICS CAN
SUPPORT YOUR HEALING JOURNEY.**

CONTACT US

p (248) 538-0300

f (248) 538-8012

info@yogamedics.com

www.YogaMedics.com



**Short or long-term
aluminum ramp rentals.**

(517) 278-3293
allamericanramprentals.com



Rampit USA, Inc.
Aluminum Access Ramps

**We build *Independence*
~~wheelchair ramps.~~**

rampitusa.com

